



Presented by Lindsay Kirsch

# Photoshop Q & A



# Contents

**1. Rotating & Flipping Images**

**2. Cropping Images**

**3. Automation**

**4. File Size & Resolution**

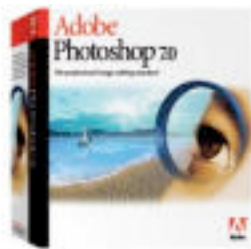
**5. Image Formats**

**6. Outputting for the Web**

**7. More Information**

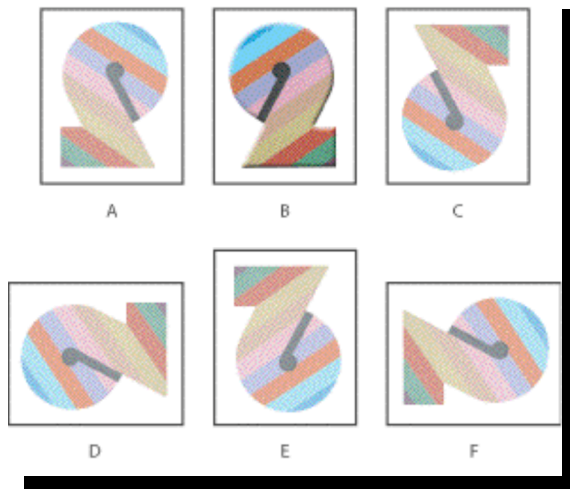
# Important

- All demos have been created using Adobe Photoshop CS
- If you have problems, it may be because you have a different version of this program.



# Rotating and Flipping Images

- The Rotate Canvas commands let you rotate or flip an entire image
  - Chose Image > Rotate Canvas



- A. Flip Horizontal
- B. Original image
- C. Flip Vertical
- D. Rotate  $90^\circ$  CCW
- E. Rotate  $180^\circ$
- F. Rotate  $90^\circ$  CW

# Cropping Images

- Cropping is the process of removing portions of an image.
- This helps to create a focal point in the photo
  - Crop using the crop tool



## Using the Crop tool:

- Select the Crop tool .
- Drag over the part of the image you want to keep to create a marquee. The marquee doesn't have to be precise, you can adjust it later.
- If necessary, adjust the cropping marquee.

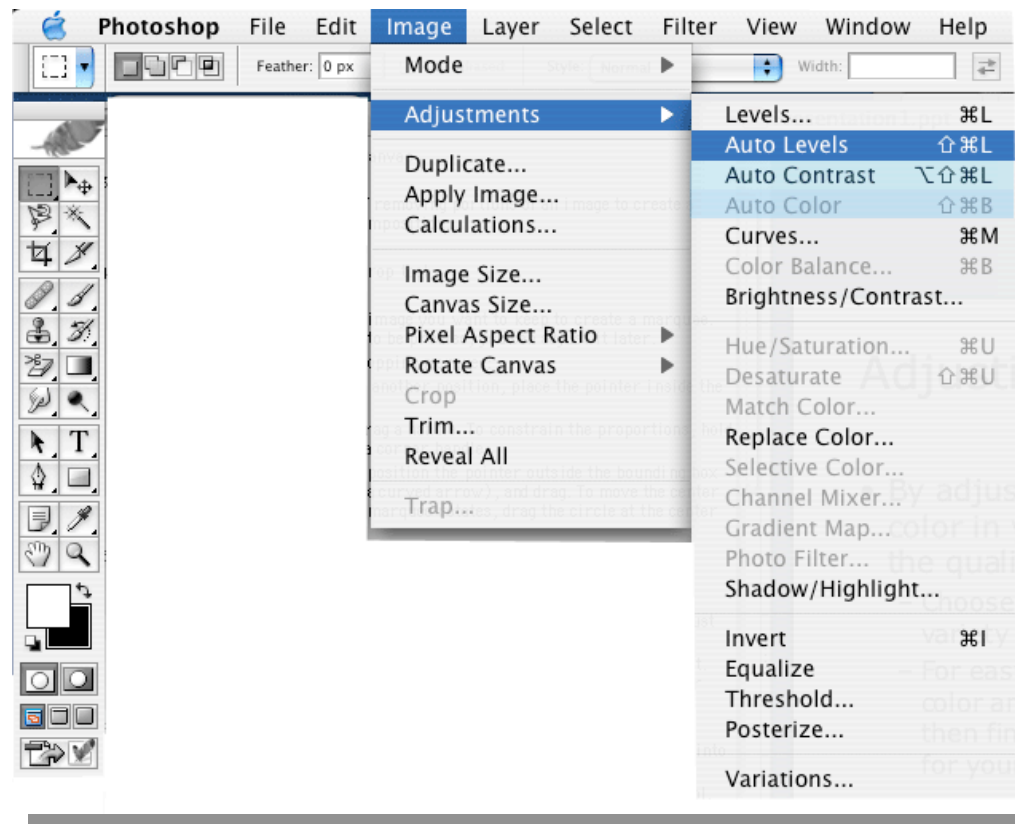


## Adjusting Levels, Contrast, and Color

- By adjusting the levels, contrast and color in your photos, you can increase the quality of the picture.
  - Choose Image > Adjustments to find a wide variety of ways to adjust your photos look.
  - For easy adjustments, use auto levels, auto color and auto contrast. Photoshop will then find what it feels to be the best values for your photo.

# Adjusting Levels, Contrast, and Color

- Choose Image > Adjustment > Your tool choice





# Automation

- The Automate commands simplify complex tasks by combining them into one or more dialogs.
- Photoshop can process multiple user defined commands using this tool.

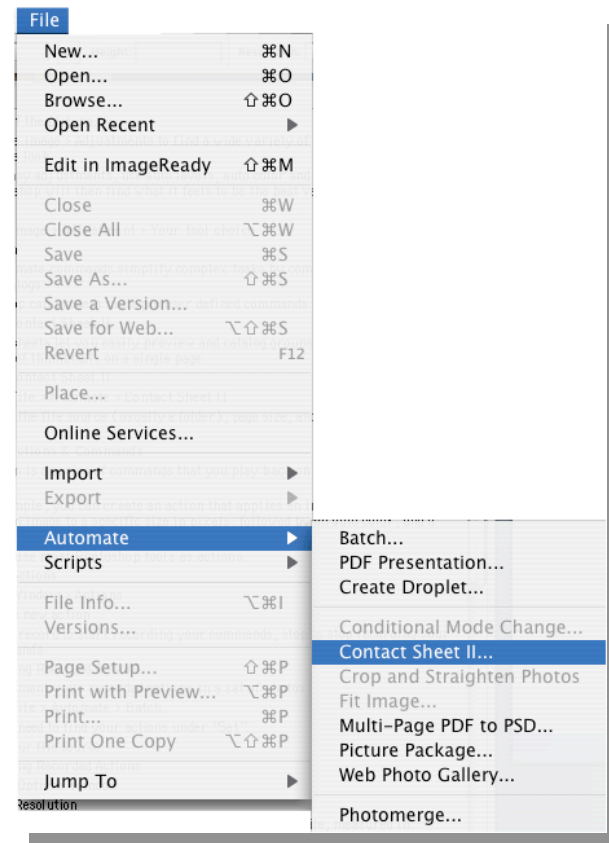
# Automate Contact Sheet II

- Contact sheets let you easily preview and catalog groups of images by displaying a series of thumbnails on a single page.



# Automate Contact Sheet II

- Choose File
  - > Automate
  - > Contact Sheet II
- Select the file source (usually a folder), page size, and number of images / page.

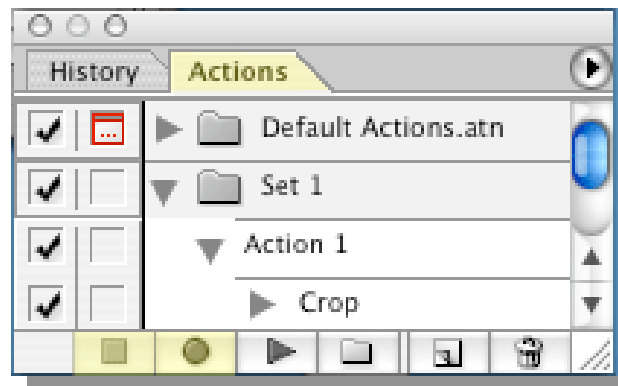


## Automate Actions & Commands

- An *action* is a series of commands that you play back on a single file or a batch of files.
- For example, you can create an action that applies an Image Size command to change an image to a specific size in pixels, followed by an auto color, and a Save command that saves the file in the desired format.
- You can use most Photoshop tools as actions.

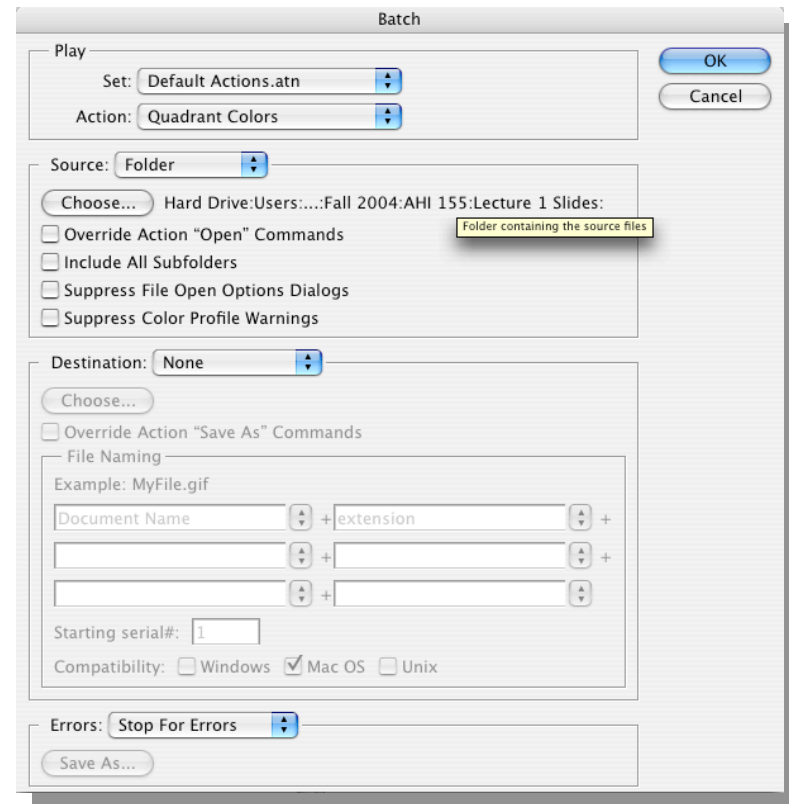
# Recording Actions

- Choose Window > Actions
  - Create new action
  - Press record to start recording your commands, stop to stop recording your commands



# Implementing Recorded Actions

- To implement your recorded actions on a set of photos
- Choose File
  - > Automate
  - > Batch



# File Size & Resolution

- The file size of an image is the digital size of the image file, measured in kilobytes (K), megabytes (MB), or gigabytes (GB).
- File size is proportional to the pixel dimensions of the image.
- Images with more pixels may produce more detail at a given printed size, but they require more disk space to store and may be slower to edit and print.
- Image resolution thus becomes a compromise between image quality (capturing all the data you need) and file size.
- Another factor that affects file size is file format. Due to varying compression methods used by GIF, JPEG, and PNG file formats, file sizes can vary considerably for the same pixel dimensions

## Image Formats: JPEG versus GIF

- JPEG for continuous tone images, such as photographs. JPEG compression preserves a broad range of color and subtle variations in brightness, but does not support transparency.
- GIF for animations, solid-color images, and images with repetitive color, such as line art and logos. GIF supports transparency.

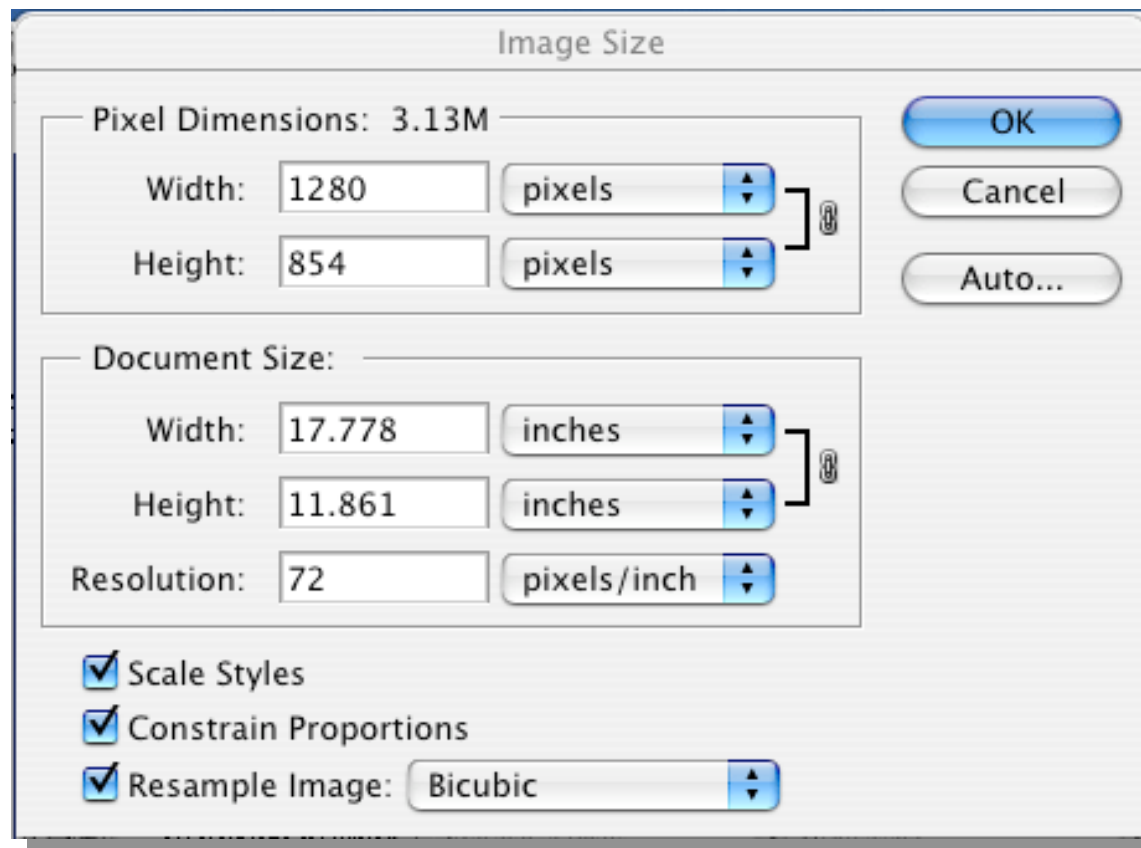


# Determining Resolution

- Files for print should be at a resolution of 300+ dpi
- Files for computer screen use should be set at 72 dpi
- Resolution cannot exceed the original quality!
- The higher the resolution, the larger the file size!

# Adjusting Resolution

- Choose Image > Image Size

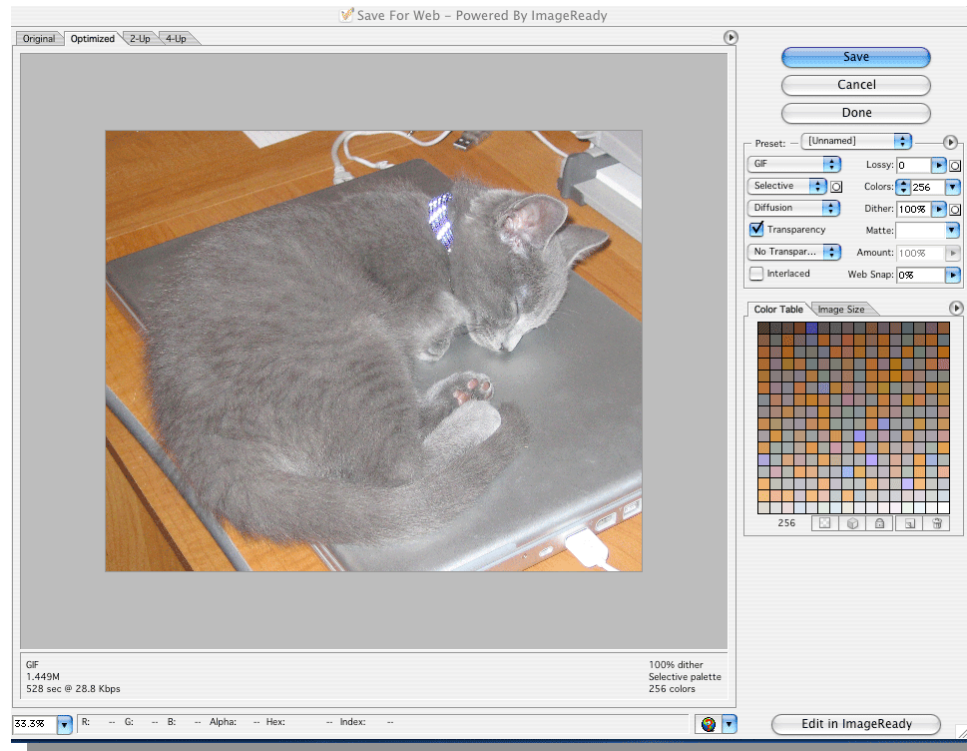


# Outputting for the Web

- The Save for Web dialog box lets you preview different optimization settings.
- Each preview includes file size and estimated download time. Thus, without altering the original image, you can see the results of various settings and choose the setting that best meets your needs.

# Outputting for the Web

- Resize and optimize an image for the Web using the Save for Web dialog box in Photoshop.
  - Choose File > Save for Web



# For More Information

- The Adobe Help Menu
  - Choose Help > Photoshop Help

