



# NEMO Newsletter

Quarterly Journal of the North East Map Organization

NUMBER 64

February 2009

## NEMO 23<sup>rd</sup> Annual Meeting June 4-5, 2009 *Looking Forward to Spring*

**T**he 2009 NEMO meeting will be held June 4-5, 2009 at the Campus Center <http://www.umb.edu/campuscenter/> of the University of Massachusetts Boston. This recently constructed building has panoramic views of Boston and Boston Harbor.

The site is convenient to rail, subway and bus services <http://mbta.com/>. Reasonably priced hotels are within walking distance of the UMass Boston shuttle bus.

Also within walking distance of the campus is the Commonwealth of Massachusetts Archives <http://www.sec.state.ma.us/arc/arcidx.htm> and the JFK Library <http://www.jfklibrary.org/>.

The NEMO 2009 program team is hard at work and will give us more information as the program develops. In the meantime, please save the dates June 4-5, 2009.—Paige Gibbs—facilities liaison.

West  East

*Meeting Questions or Suggestions?*

Contact Lucinda Hall, Captain-Elect  
(603) 646-0962

[Lucinda.M.Hall@Dartmouth.EDU](mailto:Lucinda.M.Hall@Dartmouth.EDU)



## NEMO 2008 MEETING PHOTOS



## Minutes

**Northeast Map Organization 22<sup>nd</sup> Annual Meeting, Chester, Vermont  
Business Meeting, June 6, 2008**

Meeting was called to order at approximately 10:30 a.m. by Captain Cynthia Dietz.

**Old Business:****Secretary's Report:**

The minutes of the last meeting recorded were accepted as printed in the NEMO newsletter.

**CUAC Report:**

Thelma Thompson, one of two NEMO representatives to the Cartographic Users Advisory Council, reported on this year's CUAC meeting held at Environmental Protection Agency headquarters in Washington, DC. She will provide David Bertuca with Anne Graham's list of presenters and websites. Full presentation reports will be available later this summer.

Anne Graham will be co-chairing next year's CUAC meeting. NEMO members with any concerns about federal cartographic information can contact either Thelma or Anne.

She reminded attendees that the CUAC location for the webinar on GeoPDFs and JPEG 2000 will be MIT and that the webinar will be made available after the session. The National Archives and Records Administration hopes to work with CUAC and Open Geospatial Consortium's Data Preservation Working Group to sponsor additional webinars on the topic of archiving geospatial information. Thelma noted that CUAC voted to co-sponsor a meeting in 2010 to follow up on the successful 2005 meeting at the Library of Congress. The topic will be preserving the past and moving forward to the future.

**Treasurer's Report:**

Heather Hoffman reported that the treasury contains \$5939.81, with expenses of this meeting still to be paid. She noted that in general the balance averages \$2000-2500. Suggestions for other expenditures were deferred to new business.

**Webmaster and Newsletter Editor Report:**

David Bertuca reported on the NEMO website and newsletter. The website attracts quite a few visitors, a few of whom have joined NEMO. David requested members to send other materials to post on the site as well as for the newsletter. David will be finalizing the next newsletter shortly. He has especially appreciated having reviews and encouraged us to contribute more. Cynthia Dietz noted that the blog is a good venue for making quick announcements.

**Captain-Elect's Report:**

Captain-Elect, Dorothy Nash, noted that she sees NEMO as an important organization to help move practitioners of GIS and related technologies beyond a state-level focus to a more regional viewpoint.

**Captain's Report:**

In her Captain's report, Cynthia Dietz expressed concern that a lack of strategic planning may hinder the organization from potential greater impact, such as being able to provide more guidance for beginning map librarians and the possibility of holding a second virtual meeting during the year. She would like to see us choose a project to focus on in the next year. Using her earlier discussion of Wikipedia and the vendor presentation on GeoPDF as examples, she suggested these might be areas to explore.

**New Business:****New Projects:**

David Bertuca will determine whether his institution is willing to host a NEMO Wikipedia page, and will work with Angelique Jenks-Brown and Stephanie Lewis to set up the site. Ideally, each member would contribute something in his or her area of interest. Links to open access historical maps would be valuable, perhaps "rated" by number of members who nominated them. Links could be either a single interesting map, or an entire website, and should include brief annotations. Bill Timmons, GeoPDF representative, offered to create GeoPDFs of any ArcMap mxd files sent to him. Suggestions included our campus maps and a map of Chester based on the walking tour that was in our meeting packet.

Thelma Thompson reported two new developments at the University of New Hampshire. The higher resolution, georeferenced historic topographic maps of New Hampshire without collar information are now available on the NH GRANIT GIS repository website. The Library copies with collars are not yet available, but we hope will be soon.

As a result of a small grant from the Northeastern Section of the Geological Society of America and thanks to UNH's participation in the Boston Library Consortium Open Content Access project, we have begun a project to digitize the guidebooks from the annual New England Intercollegiate Geological Conference. Unbound materials will be scanned in-house and bound volumes are being sent to Boston Public Library. We will be creating a geographical search interface based on bounding boxes for each trip.



**Election of Officers:**

Lucinda Hall of Dartmouth College volunteered and was elected Captain-Elect.

There were no additional nominations for Secretary; Thelma Thompson was elected Secretary for another term.

**Notes about Future Meetings:**

The map competition last year was very successful, but was not possible this year. However, next year's event will be announced earlier and revised guidelines will be used.

Tentatively, next year we will be meeting in Boston. Stephanie Lewis will check on whether Boston Public Library will support the meeting, although we may wish to actually meet at another location. Paige Gibbs offered to help Lucinda with facilities arrangements. George Carhart noted that once the Osher Map Library is in its new facilities, they would like to host a future meeting. Last year in New York City, Wangyal Shawa of Princeton offered to hold a meeting there.

**Support of Local Historical Societies:**

We gave further consideration of how NEMO might help small historical societies preserve and make available maps in their collections. Paige Gibbs moved, seconded

by Heather Hoffman, and with friendly amendments offered by David Cobb and Joel Grossman. We voted to give the Chester Historical Society \$100 in support of their project to digitize Sanborn fire insurance maps of Chester. We will inform Newsbank of this gift and suggest that they might consider something similar. This will be the initial grant in a planned annual solicitation of proposals. NEMO will provide a grant up to \$200 to small, non-commercial organizations in need, to be matched by other funds. A group consisting of Joel Grossman, David Bertuca and Thelma Thompson will write the specific guidelines.

We further discussed the need to cooperate with state historical societies and with efforts of regional groups within the Society of American Archivists who also advise local historical societies and provide workshops and other resources. We might wish to provide information on our website about inexpensive or free software suitable for use with maps.

The meeting closed with motions of thanks to Cynthia Dietz, outgoing Captain, and to Dorrie Nash for her work as Captain-Elect in organizing this excellent meeting and Angelique Jenks-Brown as Registrar.

Respectfully Submitted,  
Thelma Thompson, NEMO Secretary





# NEMO 2008 MEETING

## CHESTER, VERMONT





## For Map Librarians

### *Journal of Map & Geography Libraries*

NEMO's long-time map cataloging member, Paige Andrew, also counts amongst his duties an ongoing commitment to serving as co-editor of the *Journal of Map & Geography Libraries: Advances in Geospatial Information, Collections & Archives* (JMGL). He, and co-editor Mary Lynette Larsgaard, have overseen four volumes of this biannual publication in the past several years (the second number of volume four was published in July 2008). Volume five is well underway, to be published in 2009, and volume six is at the beginning stages.) The journal was born out of a need—once both of the formal peer-reviewed journals, *Meridian: A Journal of the Map and Geography Round Table of the American Library Association* and the Special Libraries Association, Geography and Map Division *Bulletin* ceased publication there lacked a peer-reviewed outlet for members of the map librarianship community.

Some issues of JMGL are general in nature, made up of a group of interesting but non-related articles. Some issues however, are theme-based, including the latest one, volume four, which is about GIS uses within the United States Department of Energy, and also it is a double-issue so that it includes a total of 26 articles between the two issues. Titles between the two issues range from "Geospatial Infrastructure at the U.S. Department of Energy's Hanford Site: A Review of Existing Conditions and a Proposed Action for Development of a Spatial Data Infrastructure" to "3-D Hydrodynamic Modeling in a Geospatial Framework." Theme-based issues are typically overseen by a Guest Editor, and I'm pleased to note that another NEMO member, Ron Grim, guest-edited our theme issue on historical cartography (Volume 3, No. 2, 2007), and it includes articles written by other NEMO members: Nancy Kandoian and Yolanda Theunissen!

Paige and Mary are always looking for new material for future issues, as well as ideas for themes, so please don't hesitate to jump in and send them a note! Paige can be reached at [pga2@psulias.psu.edu](mailto:pga2@psulias.psu.edu), and Mary is at [mary@library.ucsb.edu](mailto:mary@library.ucsb.edu).

Forthcoming is a general issue with articles about creating a cartobibliography of maps found within books and other materials through the use of a community-based website, one on identifying and cataloging map reproductions correctly, and also one on researching the use of a historical map to outline the geopolitical methods of establishing a

province in France in the 19th century, to name a few. I might also add that the publisher of JMGL recently changed hands when the Taylor & Francis Group, headquartered in London and Philadelphia, bought out longtime libraries-related publisher, the Haworth Information Press. Please do send your thoughts and ideas (and manuscripts!) to Paige and Mary!

(See the journal website for more, including sample text: <http://www.haworthpress.com/store/product.asp?sku=J230>.)



### Map Librarian Core Competency Standards

Those NEMO members who are map librarians are probably aware of a profession-wide move to document core competency standards as part of the larger education movement within the profession of Librarianship. The Special Libraries Association delivered a set of core competencies for special librarians a couple of years ago, and other groups have followed suit, such as the folks who are members of the rare materials and archives worlds.

Well, map and GIS librarians are hot on the trail; members of the Education Committee of the Map and Geography Round Table (MAGERT) of the American Library Association (ALA) formed a Map and GIS librarianship core competencies committee in June 2007 and by June 2008 drafted a 21-page (so far) document that includes a growing reading list/bibliography/webliography. NEMO member Paige Andrew is serving a dual role in this effort, chairing the subcommittee on core competencies for map cataloging and metadata creation, as well as volunteering to be the Chief Editor. This draft document was made available for comments from MAGERT members at the ALA Annual Conference in Anaheim, California in June 2008, and shared out via MAPS-L and other lists during the summer of 2008 with a goal of finalizing a document by the ALA Midwinter Meeting in Denver in January 2009. Once approved both by the MAGERT members and Board and the American Library Association, this professional core competencies document will then, reside with similar documents in the ALA Office of Accreditation. Members of the Core Competencies committee hope that this set of standards will serve both current and future map/GIS librarians well into the future, and also be used by those ALA-accredited institutions that offer the masters degree in librarianship and related professions as part of their teaching curricula.

Document available online: <http://www.ala.org/ala/mgrps/rts/magert/publicationsab/MAGERTCoreComp2008.pdf>. —Paige Andrew

## Reviews

### *Arno Peters: Radical Map, Remarkable Man*

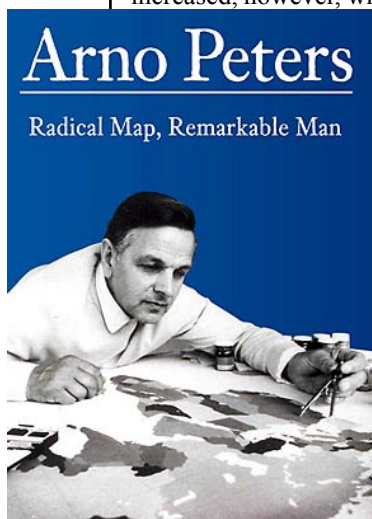
DVD; \$39.95 individuals, \$89.95 institutions  
ODT Maps, 2008.

*"We don't need a new map, we need a new view of the world"*—Arno Peters

The centerpiece of this DVD is a thirty minute film on Arno Peters, creator of the controversial Peters map. Map professionals are familiar with the map's rocky reception; as the film points out, the map "provoked controversy and outrage, probably more so than any map in history." For specialists then, the highlight of the film will most likely be the interviews conducted with Peters just over a year before his death. Background on Peters' upbringing, including archival photos, is also of interest. He was raised in a German family of radical trade unionists who hosted famous members of the international progressive movement, including William Pickens, president of the NAACP. Pickens' autobiography was formative for the young Peters, who made it his life's work to give voice to peoples and societies written out of the history books. As a historian he embarked on a project of writing what he called a "true world history", rather than the European-centered histories that masqueraded as world history. According to Peters: "the base of my world history is fairness to all peoples". In pursuing this project he became aware of the distortions inherent in the Mercator maps of the world, where the sizes of the continents in the northern hemisphere are greatly exaggerated as compared to those in the southern. Given his commitment to fairness to all peoples, Peters wanted a map that accurately reflected landmass sizes. As Peters points out in the interview: "Mercator's map came along just as Europe was taking over the world. His map is a map of Eurocentrism, of imperialism, of colonialism. And this time is over."

The second half of the documentary deals with the response to the map—first published in 1974—both from left-wing organizations who championed it and from professional cartographers, who mostly disdained it. The reception is covered primarily in interviews with the various publishers of the map in the English-speaking world, including Terry Hardaker from Oxford Cartographers Office, Ward Kaiser, who published the first Peters map in the United States at the urging of a group of Christian mission workers, and Bob Abramms, current North American publisher of the map (and the publisher of this DVD). The map was embraced fairly quickly by groups interested in social justice, especially as it related to the developing world. The German Chancellor Willy Brandt used the map in the Brandt Report on North – South relations. Pope John Paul II hung a copy in the Vatican. Still, cartographers, especially in

the United States, were indifferent if not outright hostile. Arthur Robinson, prominent American cartographer and creator of the Robinson projection, called Peters' map a "cleverly contrived, cunningly deceptive attack" against cartography. Perhaps due to this reception the map was more popular in Europe than in the United States. Exposure to U.S. audiences was greatly increased, however, when the map was featured on an episode of the prime time television hit "The West Wing" in 2002. Clips of this appearance are included in the DVD.



The final part of the film contains an anecdote that shows that Peters remained an ideologue to the end. Kaiser, Abramms, and Dennis Wood showed Peters a copy of their book *Seeing Through Maps* (reviewed in NEMO Newsletter 62), which argues that many different projections are needed to accurately represent the world. Peters does not like the book, and maintains that his map is the one proper way to view the world. The documentary closes with a series of questions posed by the narrator about

maps, projections, and representation, a good prelude to discussion about the film.

For people unfamiliar with the map and its creator the film provides a good introduction to Arno Peters. The most suitable audience would probably be high school or early undergraduates, although anyone with an interest in the subject is likely to get something out of it. The DVD comes with a large amount of supplemental material. This is somewhat of a mixed bag, but the persistent viewer will find some wheat among the chaff. There are outtakes from the film, including 3 additional clips of Peters. Five clips discuss the origins of the English translation of the Peters map, which was initiated by Christian missionaries. There is also a series of print resources on the map and related material from the film, as well as several PowerPoint presentations. While some of these will be useful to educators and students, the inclusion of some, like the finding aid for the William Pickens papers in the NYPL, is a bit baffling. Perhaps the most interesting of these extras is a photo-biography of Peters that includes many photos not seen in the film and the tidbit that Peters went to Hollywood in the 1920s to produce movies.

Review by Reed Lowrie, Science Reference and Cartographic Librarian, Cabot Science Library Harvard University.

#### Ordering information:

[http://www.odtmaps.com/detail.asp\\_Q\\_product\\_id\\_E\\_apeters-dvd](http://www.odtmaps.com/detail.asp_Q_product_id_E_apeters-dvd)





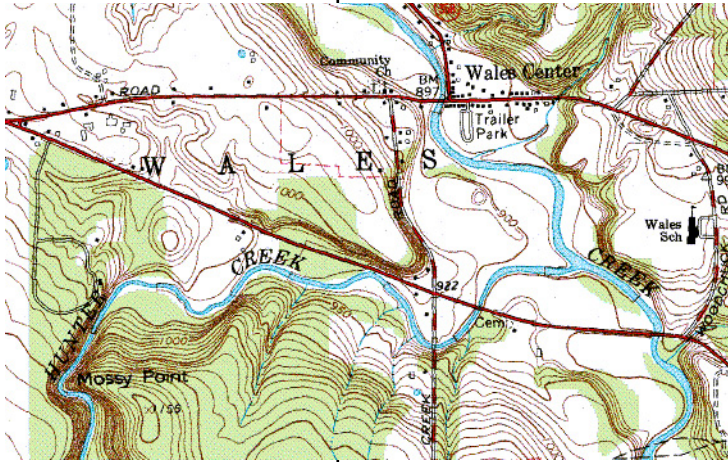
## UB Libraries Develops New York State Geographic Data/Maps Database

Ever wonder how many more canals there are in New York State other than the Erie Canal? Where are our reservoirs? What areas are designated “forests”? Where are the “falls” other than Niagara? (there are 163 more)

The University at Buffalo Libraries now provides a database, the **NYS Gazetteer and GeoData Collection**, developed by Geosciences Librarian **Michele Shular**, which facilitates searching and locating 38,000 places, features, and other geographic information within New York State. Ms. Shular has electronically linked U.S. Geological Survey (USGS) digital maps archived at the UB Libraries with the New York State portion of the “Geographic Names Information System” (GNIS), a Federal repository of official domestic geographic names maintained by the USGS. The **NYS Gazetteer and GeoData Collection** is available free to

Searches can be run on geographic names, feature type, by county map, by U.S. Geological Survey quadrangle, or by a merger of multiple categories. When searching the database, there are links provided to the appropriate feature in *Google Maps*. For example, you can locate:

4961 schools  
298 hospitals  
590 towers (largely radio/TV)  
427 swamps  
68 streams in Erie County  
127 islands in St. Lawrence County



This type of extensive geodata/maps/gazetteer database follows the lead of a similar product by University of Virginia librarians.

Ms. Shular notes that the creation of this database is meant to promote and facilitate public access to free topographic maps and

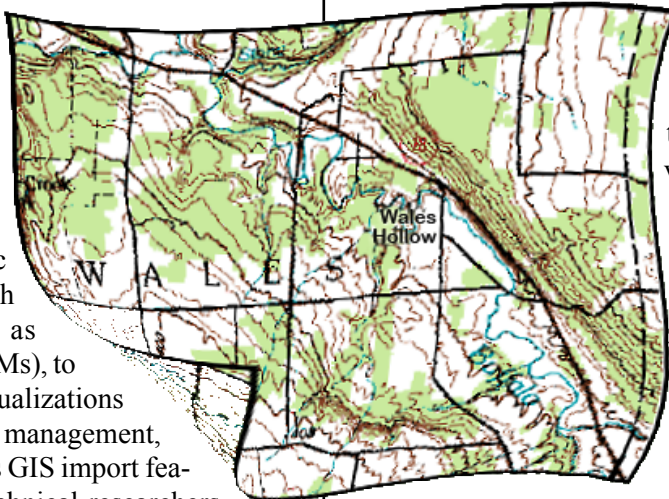
gazetteer information for New York State through an easy, searchable interface. “Topographic maps are wonderful tools that provide detailed information for natural and cultural features on the ground, such as slopes, valleys, rivers, roads, and even vegetation cover. Whether it is a K-12 teacher looking for geography class maps, a hiker looking to print a field map, or a GIS technician searching for a digital image to import into a GIS application, this database services a wide variety of needs. In time, the database will be expanded to include maps in a variety of scales, as well as other format types of geospatial data.”

**UB LIBRARIES**

the public on the UB Libraries website:

<http://library.buffalo.edu/libraries/e-resources/nysgeodata.html>.

The digital maps, technically referred to as georeferenced *Digital Raster Graphics* (DRGs), can be printed for class or field work or imported into Geographic Information System (GIS) applications. For example, DRG topographic maps can be combined with other geospatial data, such as Digital Elevation Models (DEMs), to enhance terrain and slope visualizations useful for site planning, land management, and earth science studies. This GIS import feature is useful for students, technical researchers and professionals in many fields, such as business, government, planning, and more.



Don Gramlich, Lead Programmer Analyst in the UB Libraries, provided technical support for the development of the database.

For questions or assistance with the **NYS Gazetteer and GeoData Collection**, contact Ms. Shular in the UB Libraries by email:

[mshular@buffalo.edu](mailto:mshular@buffalo.edu),  
or by phone:

(716) 645-2947 x223.



## The NEMO Newsletter

Quarterly Journal of the North East Map Organization

Number 64

February 2009

Published quarterly by the North East Map Organization (NEMO), all rights reserved. Contact the editor for permission to reproduce material. The views expressed in this newsletter do not necessarily reflect those of NEMO nor its members.

We welcome contributions and suggestions. Please submit materials to the editor by e-mail, 3.5" disk (PC/Mac (Word, RTF, or ASCII, tif, jpg)) CD-ROM, or by sending a typewritten document. Submissions and newsletter questions should be directed to:

Editor: **David J. Bertuca**, Map Librarian  
Science & Engineering Library  
225 Capen Hall  
University at Buffalo  
BUFFALO NY 14260-1672

phone: 716-645-2947 x229

fax: 716-645-3710

[dbertuca@buffalo.edu](mailto:dbertuca@buffalo.edu)

**NEMO** (North East Map Organization) is dedicated to serving as a unifying body for all who use, produce, collect, and market maps and cartographic information in the Northeast; increasing communication between all interested in maps; and working with state, regional, and national organizations and government agencies in dissemination of maps and cartographic information. NEMO's principal region is CT, DE, ME, MA, NH, NJ, NY, PA, RI, VT, and Ontario/Québec.

**NEMO Membership** is \$15 per year. Membership year runs June-May and *NEMO Newsletter* subscriptions are included with membership. Back issues for the current year are included with new memberships. To join, send a check for \$15 payable to **North East Map Organization** to:

**Eric Riback**  
National Geographic Maps  
P.O. Box 4357  
Evergreen, CO 80437  
phone: 800-962-1643 x123  
fax: 509-461-4285

e-mail membership-related questions/address changes to:

[nemo@mapville.com](mailto:nemo@mapville.com)

**North East Map Organization**  
c/o David J. Bertuca, Map Librarian  
Arts & Sciences Libraries  
225 Capen Hall  
University at Buffalo  
BUFFALO NY 14260-1672

## First Class Mail

Return address requested


☐

Did your membership expire?  
If this box is checked  
Please renew today!